



# RUBIQUANT

QUANTITY SURVEYORS  
SINCE 2001

## COMPANY PROFILE

**25**  
YEARS  
OF EXCELLENCE



**THE SA COUNCIL FOR THE  
QUANTITY SURVEYING PROFESSION**

Established in terms of the Quantity Surveying Profession Act 2000 (Act No 49 of 2000)



**The Association of  
South African  
Quantity Surveyors**

**BLOEMFONTEIN** 21A Milner Road | Waverley | Bloemfontein 9301

Tel: (+27) 51 436 9538

**CAPE TOWN** Unit 41&42, Buena Vista Office Park, 1 Heuwelkruin Close, Eversdal, Cape Town, 7550

Tel: (+27) 21 712 0229

**HARRISMITH** 37 Bester Street | Harrismith 9880

Tel: (+27) 58 622 3453

**KIMBERLEY** 41 Mac Dougall Street | Royldene | Kimberley 8301

Tel: (+27) 53 831 2930

**PRETORIA** 55 Bergenbos | 330 Sprokie Avenue | Faerie Glen | Petoria 0081

Cell: (+27) 82 578 7498

**RICHARD'S BAY** 15 Lira Link | Montego Park Suite 3A | Richards Bay 3901

Cell: (+27) 82 906 1658



**AWARDED GOLDEN  
ARROW 2026** 14<sup>TH</sup> YEAR IN A ROW  
AWARD WINNER

Rubiquant Offices

Office Details  
Black Economic Empowerment  
Fields of Expertise  
About Us  
Mission Statement  
Our Vision  
Aims and Objectives  
Traditional Quantity Surveying Services  
Specialised Services  
Projects  
Current Clients  
Project Profile  
Team

ARCHITECTURE FOR HUMANITY

Football for Hope Centre, Kimberley

AVIATION

Renovations and additions to Kimberley and Upington airport

MIXED-USE DEVELOPMENT

The Sentinel  
Mirage, De Waterkant, Cape Town  
Lot 9 and 10, Cape Town

AGRICULTURAL

New stable block at the stock theft unit, Phuthaditjhaba

RESIDENTIAL

Great Oaks Retirement Development, Constantia  
Le Petit Village, Franschhoek  
Romney One Apartments, Cape Town  
House Mthembu, Mtunzini  
Evergreen Lifestyle, Muizenberg  
Evergreen Lifestyle, Lake Michelle, Noordhoek  
Evergreen Lifestyle, Bergvliet  
The Crystal Apartments, Camps Bay  
50 Victoria Road, Clifton  
Private house, Fresnaye, Cape Town

COMMERCIAL

The Capital Mirage - Hotel fit-out, Cape Town  
The Edge Restaurant, Naval Hill, Bloemfontein  
Protea Hotel, Saldanha Bay  
Maitland Offices, Cape Town

EDUCATION

Upgrading Teaching & Learning Spaces at NWU Campus (E7)  
Four new schools in the Free State  
New physics and geography building, Qwa Qwa  
Northern Cape Libraries  
CUT Bloemfontein Campus, Dirk Coetzee Building  
CUT Welkom Campus, Lecture Complex  
Grade R brick and mortar classrooms  
Winnie Mandela Primary School, Johannesburg  
Tembaletu School Dormitories, Gugulethu  
Fezile Dabi District Platooning Schools

SPECIALITY

Lighthouse Precinct Development, Agulhas  
Dinosaur Interpretive Centre, Golden Gate Highlands National Park  
Constantia Uitsig Wine Estate, Cape Town  
Naval Hill Digital Planetarium, Bloemfontein  
SANParks: Skukuza Rest Camp Upgrades

GOVERNMENT

SAPS Provincial Office, Cape Town  
Secure care centre and one stop facility, Qwa Qwa  
Clarens, Clocolan, Fouriesburg, Paul Roux and Reitz SAPS repair and renovations  
New Department of Public Works office building, Bloemfontein  
Galeshewe Branch Court, Kimberley

HEALTH

Hermanus Hospital upgrade  
Grabouw Community Health Care Centre  
Elizabeth Ross Hospital, Qwa Qwa  
Groote Schuur Hospital refurbishment, Cape Town  
Tygerberg Hospital refurbishment  
Medical Centre, Lubango, Angola

HUMAN SETTLEMENT

Communicare, Bothasig Gardens  
Metsimoholo Community Residential Units, Zamdela Sasolburg  
New student residence, Qwa Qwa  
Low cost housing, Colesberg

INDUSTRIAL

Dube Tradeport Corporation: Mini Factories in TradeZone 1, Durban  
Spec-Build Warehouse On Erf 650, La Mercy located at Dube Tradeport

TRANSPORT

Mangaung Intermodal Transport Facility, Bloemfontein



## RUBIQUANT OFFICES

BLOEMFONTEIN  
HARRISMITH  
RICHARDS BAY  
KIMBERLEY  
CAPE TOWN  
PRETORIA

## WE ARE

CONSTRUCTION COST CONSULTANTS  
QUANTITY SURVEYORS  
COST ENGINEERS  
PROJECT MANAGERS  
PROGRAMME MANAGERS

PROUDLY ASSOCIATED WITH THE FOLLOWING BODIES



### FREE STATE BLOEMFONTEIN

21A Milner Road  
Waverley  
BLOEMFONTEIN  
PO Box 35470  
FAUNASIG  
9325  
Tel: (+27) 51 436 9538

### FREE STATE HARRISMITH

37 Bester Street  
HARRISMITH  
PO Box 710  
HARRISMITH  
9880  
Tel: (+27) 58 622 3453

### KWAZULU-NATAL RICHARD'S BAY

15 Lira Link, Montego Park Suite 3A,  
RICHARDS BAY  
CBD  
PO Box 10202  
MEERENSEE  
3901  
Tel: (+27) 35 789 3805

### NORTHERN CAPE KIMBERLEY

41 Mac Dougall Street  
Royldene  
KIMBERLEY  
PO Box 110814  
Hadison Park  
KIMBERLEY  
8306  
Tel: (+27) 53 831 2930

### WESTERN CAPE CAPE TOWN

Unit 41&42, Buena Vista Office Park  
1 Heuwelkruin Close  
Eversdal  
CAPE TOWN  
7550  
PO Box 338  
BERGVLIET  
7864  
Tel: (+27) 21 712 0229

### GAUTENG PRETORIA

55 Bergenbos  
330 Sprokie Avenue  
Faerie Glen  
PRETORIA  
0081  
Cell: (+27) 82 578 7498



## BLACK ECONOMIC EMPOWERMENT

Rubiquant is currently a proud level 1 B-BBEE contributor in terms of section a 3.6.2, Code Series CSC 000 of the 2017 Construction Sector Codes.

## FIELDS OF EXPERTISE

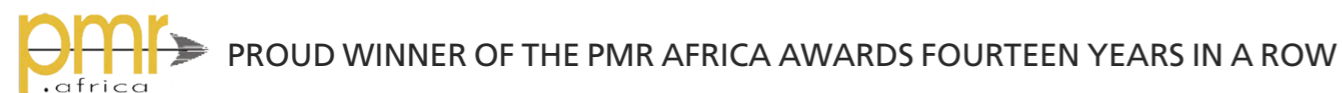
We offer quantity surveying, project and programme management services aimed primarily at addressing the aspirations and needs of the previously disadvantaged communities. Of prime concern to our organization is the accrual of maximum benefits to the targeted communities on all projects intended to attain their socio-economic enhancement.



## ABOUT US

Rubiquant is a construction cost and management consultancy that was established in 2001. Since then the practice has expanded and now operates out of six offices across South Africa.

Rubiquant prides itself as a dynamic and vibrant firm that offers a full range of professional construction consulting services and has successfully concluded a variety of projects throughout South Africa as well as Namibia and Gambia.



## MISSION STATEMENT

We are committed to excellence in the full range of consulting services provided and execute projects with emphasis on professional integrity. In this process it is expected from all the members of this practice to be dedicated to a high quality of service executed in a friendly and fair manner. We do believe in equal opportunities for all our employees and a fair distribution of wealth. We do not only accept our social responsibilities but fully

endorse the affirmative development programme in the country. This will be achieved by the provision of recruitment, promotion and growth opportunities to anyone able to satisfy the professional, technical, administrative and managerial positions within the practice, irrespective of race, colour, sex, class, language, religion, political or other opinion of projects throughout South Africa as well as Namibia and Gambia.

## OUR VISION

Through an effective business management system and continuous improvement, we want our name to be seen synonymously with the highest standard of client service in every aspect of our business.

At Rubiquant we view every project as a process of converting your defined requirement into a viable operation. The practice continuously strives to maximise the benefit of our services by identifying and focusing on your real needs and expectations. We view ourselves in alignment with the achievement of our clients' requirements through an understanding of their businesses and their real needs.



## AIMS AND OBJECTIVES

- Single-minded commitment to achieving our clients' objectives, recognising that both our clients' interests and our interests are mutually dependent.
- There is a constant quest to improve all levels of service to our client.
- Consistent and reliable advice using extensive, retrievable and up to date market information and willingness to invest in IT.
- Integrated business management system for quality effectiveness and continuous improvement so that our name is synonymously with the highest standard of client service.
- We listen to our clients, staying close to them to anticipate their needs. Clients have easy access to us at all levels, we respond rapidly and keep clients informed at all stages.
- We are independent of any design, construction or manufacturing organisation. Our advice is unbiased and confidential.
- Recruiting and appointing the best people and teams to reach both our and our clients' goals.
- Support the green building principles to prevent global warming and to enforce environmentally sustainable development principles.





## TRADITIONAL QUANTITY SURVEYING SERVICES

- Provisional investigations
- Design advice
- Cost planning and cost advice
- Cost norms
- Cost control – pro-active
- Estimates
- Bills of quantities
- Contract documentation
- Pre-qualification tenders
- Tendering and contractual arrangements
- Contract services
- Valuation certificates
- Final accounts
- Principal agent
- Project management
- Construction management
- Viability studies
- Office management
- Budgets
- Cashflow analysis
- Cashflow projections

## SPECIALISED SERVICES

- Advise on all the various contracts in use
- Disputes, lawsuits and mediation
- Cost cutting and reducing of time frames
- Property development facilitation
- Planning or programming of contract works
- Procurement of plant and materials
- Compiling of valuations and replacement values of properties
- Production cost/quality control, time standards and operational methods
- Productivity methods and evaluation
- Planned preventative maintenance
- Insolvency and liquidation
- Value engineering
- Insurance
- Arbitration
- Expert witness
- Financial design criteria
- Programme management
- Life cycle costing
- Proposal calls
- Management of consultants
- Negotiations
- Meeting facilitation
- Site control

## PROJECTS

WE HAVE SUCCESSFULLY CONCLUDED PROJECTS FOR THE FOLLOWING

- Churches and colleges
- Health and welfare
- Education projects, etc.
- Justice and correctional facilities
- Police services, etc.
- Residential
- Tourism
- SOS international
- Service stations, workshops, truckstops, etc.
- Airports
- Community based projects
- Commercial:
  - a. Factories of a variety of design and size
  - b. Office buildings
  - c. Shopping centres
  - d. Banks
  - e. Hotels & Resorts
- To achieve and maintain the highest professionalism and standards, all our offices are equipped with the latest business solution tools. This means that the business is run efficiently which is demonstrated by our client referrals as proof.



# OUR CURRENT CLIENTS INCLUDE

- Anglo American - Kolomela Mine
- Airports Company of South Africa (ACSA)
- Development Bank of Southern Africa (DBSA)
- Dube Tradeport
- Communicare
- Independent Development Trust (IDT)
- PetroSA
- National Department of Public Works
- Department of Water and Sanitation (DWS)
- Free State Department of Economic, Small Business Development, Tourism and Environmental Affairs
- Free State Department of Public Works and Infrastructure
- Free State Department of Sports, Arts, Culture and Recreation
- Gauteng Provincial Government
- Northern Cape Department of Sports, Arts and Culture
- KwaZulu-Natal Department of Public Works
- Western Cape Department of Transport and Public Works (Health)
- Western Cape Department of Health
- Mangaung Metro Municipality
- Thabo Mofutsanyana District Municipality
- Central University of Technology
- University of the Free State
- Free State Sports Science Institute
- South African National Blood Service (SANBS)
- South African National Parks (SANPark)
- South African Police Service (SAPS)
- Streetfootballworld South Africa
- Hillsong Africa
- Saldanha Hotel Properties (Pty) Ltd
- The Capital Hotel Group
- The Nova Group
- De Leeuw Group
- Diorco Investments Holdings (Pty) Ltd
- Mahe (Pty) Ltd
- Meerenhof Properties (Pty) Ltd
- Silver Falcon Trading 231 (Pty) Ltd
- The Zephyr Partnership
- Urbane Citizen
- Various private sector clients





## PROJECT FOOTSTEPS

PHOTO  
Angola: Lubango  
Medical Centre



## PROJECT PROFILE

Rubiquant is a professional cost consultancy with a national footprint of offices and projects throughout South Africa. Extensive experience in various sectors, dedicated individuals and a passion for the industry makes Rubiquant a respected firm in the industry. Rubiquant is an award winning company having received PMR Africa awards since 2012.

Our role as Quantity Surveyors encompasses far more than traditional estimates and the management of construction costs. Our responsibilities begin at the planning stage and continue throughout the construction period and after, until close out. Typically, we interpret client requirements, architectural and engineering drawings and specifications, to calculate and advise clients on project costs. We also offer valuable input in the pre-contract stages, where the clients' interests need to be taken care of. During construction we monitor expenses, progress payments and proactively ensure a value for money approach. We remain focused on engaging with the design team to consider optimal life cycle costing concepts and exploring systematic methods to improve the value of the product to suit its intended function.





The benefits to a construction project are many, but perhaps the abilities and expertise to minimise the costs of a project and enhance value for money while still achieving the required standards and quality, are often seen as the priority requirements by our clients. Our mission is to achieve a best value outcome for the client's needs.

Our company and registered professionals are proudly associated with the following professional bodies:

- The South African Council for the Quantity Surveying Profession
- The Association of South African Quantity Surveyors

## TEAM

Rubiquant was founded in 2001 and boasts more than 25 years of success and a national network of offices. We have multiple highly qualified individuals with professional experience in excess of twenty years.

Our key to success is our simple company structure and open door policy. This ensures the dedication of our individuals by ensuring equal opportunities, freedom to grow in their profession while nursing a sense of belonging.

## WEBSITE

For more information on our company, please visit [www.rubiquant.com](http://www.rubiquant.com).



# ARCHITECTURE FOR HUMANITY

## PROJECT

Football For Hope Centre, Kimberley

## YEAR COMPLETED

2015

## PROJECT VALUE

R2.7 Million

## CLIENT

Streetfootballworld South Africa

## PROJECT DESCRIPTION

This project was sponsored by Streetfootballworld as a new building for Love Life. The project comprises of a futuristic new building with office space, computer lab and activity rooms. The project also included a new synthetic football pitch with full solar lighting.





## AVIATION

### PROJECT

Renovations and additions to Kimberley and Upington airport

### YEAR COMPLETED

2010

### PROJECT VALUE

R53 Million

### CLIENT

Airports Company of South Africa (ACSA)

### PROJECT DESCRIPTION

Renovations and additions to terminals.



## MIXED-USE DEVELOPMENT

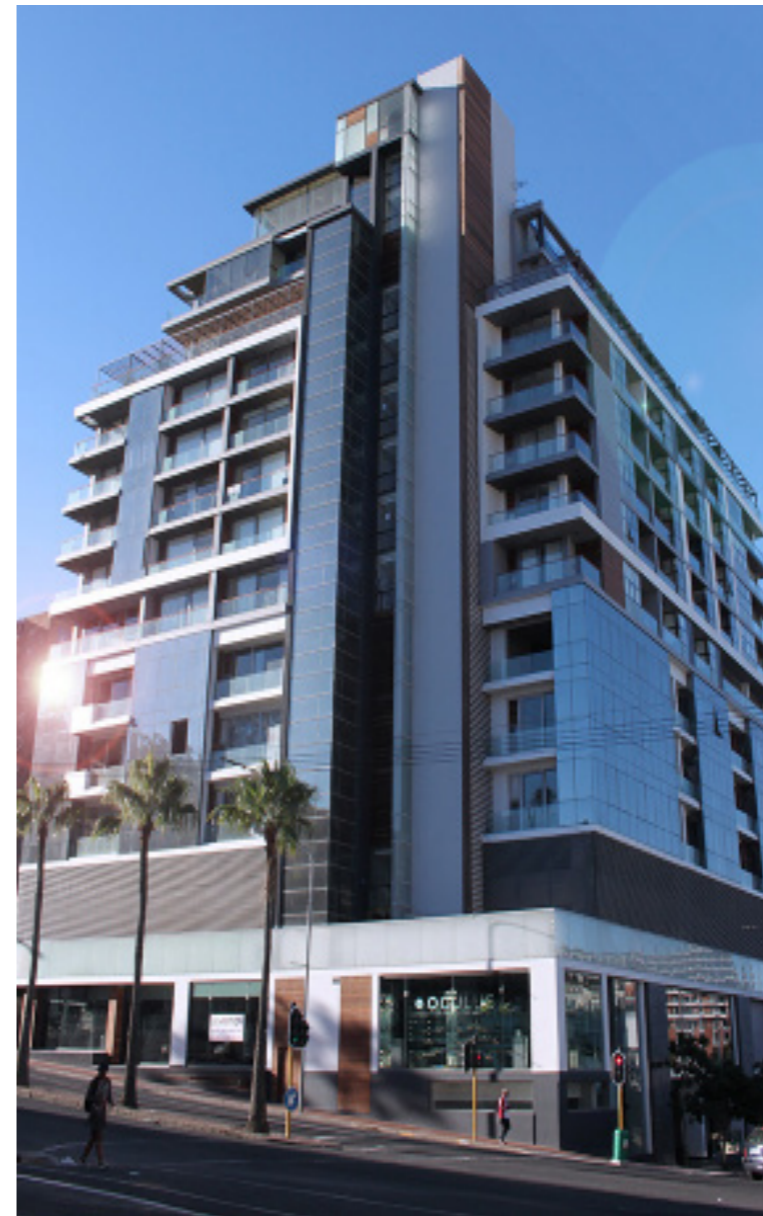
**PROJECT**  
The Sentinel, Cape Town

**YEAR COMPLETED**  
2018

**PROJECT VALUE**  
R135 Million

**CLIENT**  
Pearldale Property Developers (Pty) Ltd

**PROJECT DESCRIPTION**  
The Sentinel is a 17 storey mixed-use development. All residential apartments start on the 7th floor and include secure undercover parking. An array of one, two, and three bedroom apartments, as well as exclusive duplex penthouses stretching over the 16th and 17th floors.



## MIXED-USE DEVELOPMENT

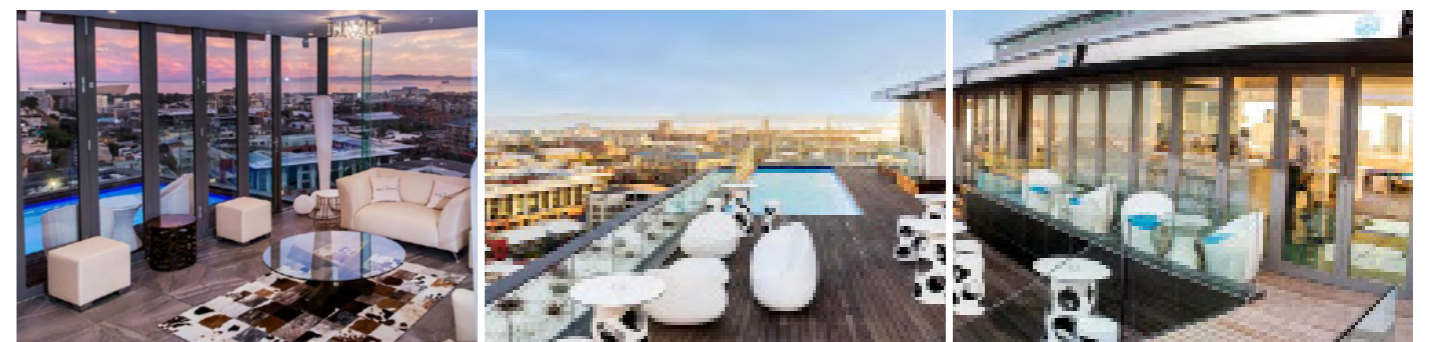
**PROJECT**  
Mirage, De Waterkant, Cape Town

**YEAR COMPLETED**  
2016

**PROJECT VALUE**  
R200 Million

**CLIENT:**  
The Zephyr Partnership

**PROJECT DESCRIPTION:**  
This project is a mixed-use development comprising parking, retail, residential and hotel areas. The total construction area is approximately 22 000 m<sup>2</sup>.





## MIXED-USE DEVELOPMENT

**PROJECT**  
Lot 9 and 10, Cape Town

**YEAR COMPLETED**  
2010

**PROJECT VALUE**  
R118 Million

**CLIENT**  
The Nova Group

**PROJECT DESCRIPTION**  
Construction of a mixed-use multi-storey building comprising parking, offices and retail areas.



## AGRICULTURAL

**PROJECT**  
New stable block at the stock theft unit, Phuthaditjhaba

**YEAR COMPLETED**  
2007

**PROJECT VALUE**  
R4 Million

**CLIENT**  
National Department of Public Works

**PROJECT DESCRIPTION**  
Construction of new stable block consisting of ten stables, a drinking fountain, an off-loading area and training ring.





## RESIDENTIAL

**PROJECT**  
Great Oaks Retirement Development,  
Constantia

**YEAR COMPLETED**  
2024

**PROJECT VALUE**  
R553.89 Million

**CLIENT**  
Constantia Life Developers

**PROJECT DESCRIPTION**  
Construction of a four-storey lifestyle centre comprising 30 apartments, frailcare facilities, administration offices, wellness centre and dining area measuring 12 500m<sup>2</sup> and 53 cottages spread over the site.



## RESIDENTIAL

**PROJECT**  
Le Petit Village, Franschhoek

**YEAR COMPLETED**  
2013

**PROJECT VALUE**  
R30.8 Million

**CLIENT**  
Silver Falcon Trading 231 (Pty) Ltd

**PROJECT DESCRIPTION**  
Construction of nine double storey and three triple storey units including civil and external works.



# RESIDENTIAL

PROJECT  
Romney One Apartments, Cape Town

YEAR COMPLETED  
2016

PROJECT VALUE  
R23 Million

CLIENT  
Urbane Citizen

PROJECT DESCRIPTION  
Construction of new five storey apartment block.



# RESIDENTIAL

PROJECT  
House Mthembu, Mtunzini

YEAR COMPLETED  
2016

PROJECT VALUE  
R5.6 Million

CLIENT  
Jeremiah Mthembu

PROJECT DESCRIPTION  
Construction of a new private home.

# RESIDENTIAL

## PROJECT

Evergreen Lifestyle, Muizenberg  
(Phase 2)

YEAR COMPLETED  
2015

PROJECT VALUE  
R74 Million

CLIENT  
The Nova Group

## PROJECT DESCRIPTION

Construction of houses and cottages, with ample parking and private gardens on beautifully landscaped 2.7-hectare grounds.



# RESIDENTIAL

## PROJECT

Evergreen Lifestyle, Lake Michelle, Noordhoek,  
Cape Town

YEAR COMPLETED  
2015

PROJECT VALUE  
R48 Million

CLIENT  
The Nova Group

## PROJECT DESCRIPTION

Construction of thirty retirement homes as part of a residential development in the southern suburbs of Cape Town.



# RESIDENTIAL

## PROJECT

Evergreen Lifestyle, Bergvliet, Cape Town  
(Phase 2 & 3)

## YEAR COMPLETED

2015

## PROJECT VALUE

R32 Million

## CLIENT

The Nova Group

## PROJECT DESCRIPTION

Construction of spacious two and three bedroomed homes surrounded by carefully tended landscaped gardens.



# RESIDENTIAL

## PROJECT

The Crystal Apartments, Camps Bay

## YEAR COMPLETED

2011

## PROJECT VALUE

R82 Million

## CLIENT

The Nova Group

## PROJECT DESCRIPTION

Construction of a three storey apartment block in Camps Bay including a basement parking garage.





## RESIDENTIAL

**PROJECT**  
50 Victoria Road, Clifton

**YEAR COMPLETED**  
2010

**PROJECT VALUE**  
R55 Million

**CLIENT**  
De Leeuw Group

**PROJECT DESCRIPTION**  
Refurbishment of a seven storey residential apartment block to a world-class level of finishes for an international owner.



## RESIDENTIAL

**PROJECT**  
Private house, Fresnaye, Cape Town

**YEAR COMPLETED**  
2010

**PROJECT VALUE**  
R14.7 Million

**CLIENT**  
Private owner

**PROJECT DESCRIPTION**  
Refurbishments and extensions to a double storey house in Fresnaye for the owner.



# COMMERCIAL

## PROJECT

The Capital Mirage - hotel fit-out, Cape Town

## YEAR COMPLETED

2016

## PROJECT VALUE

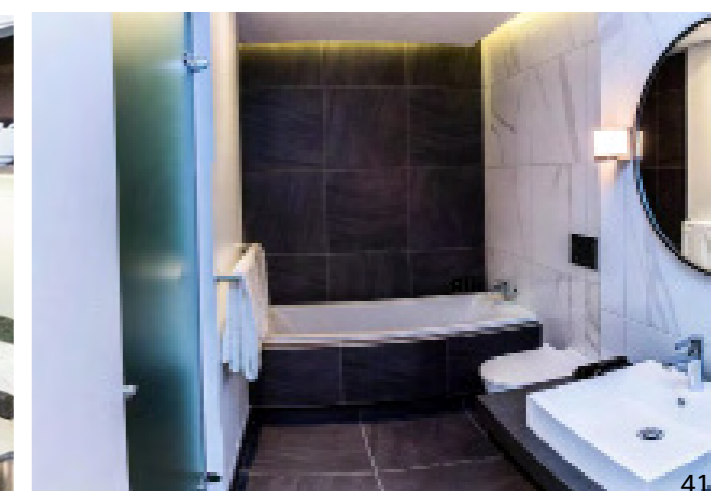
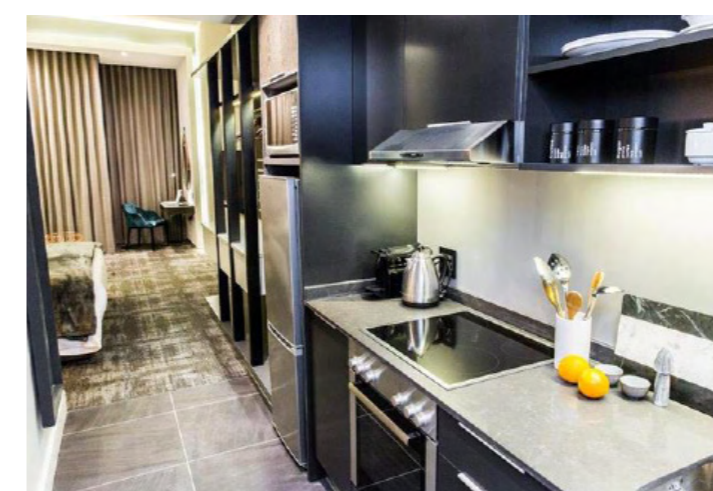
R39 Million

## CLIENT

The Zephyr Partnership on behalf of The Capital Hotel Group

## PROJECT DESCRIPTION

90 room hotel fit-out.





## COMMERCIAL

**PROJECT**  
The Edge Restaurant, Naval Hill,  
Bloemfontein

**YEAR COMPLETED**  
2014

**PROJECT VALUE**  
R4 Million

**CLIENT**  
Mangaung Metro Municipality

**PROJECT DESCRIPTION**  
Construction of a restaurant on  
Naval Hill, Bloemfontein.



## COMMERCIAL

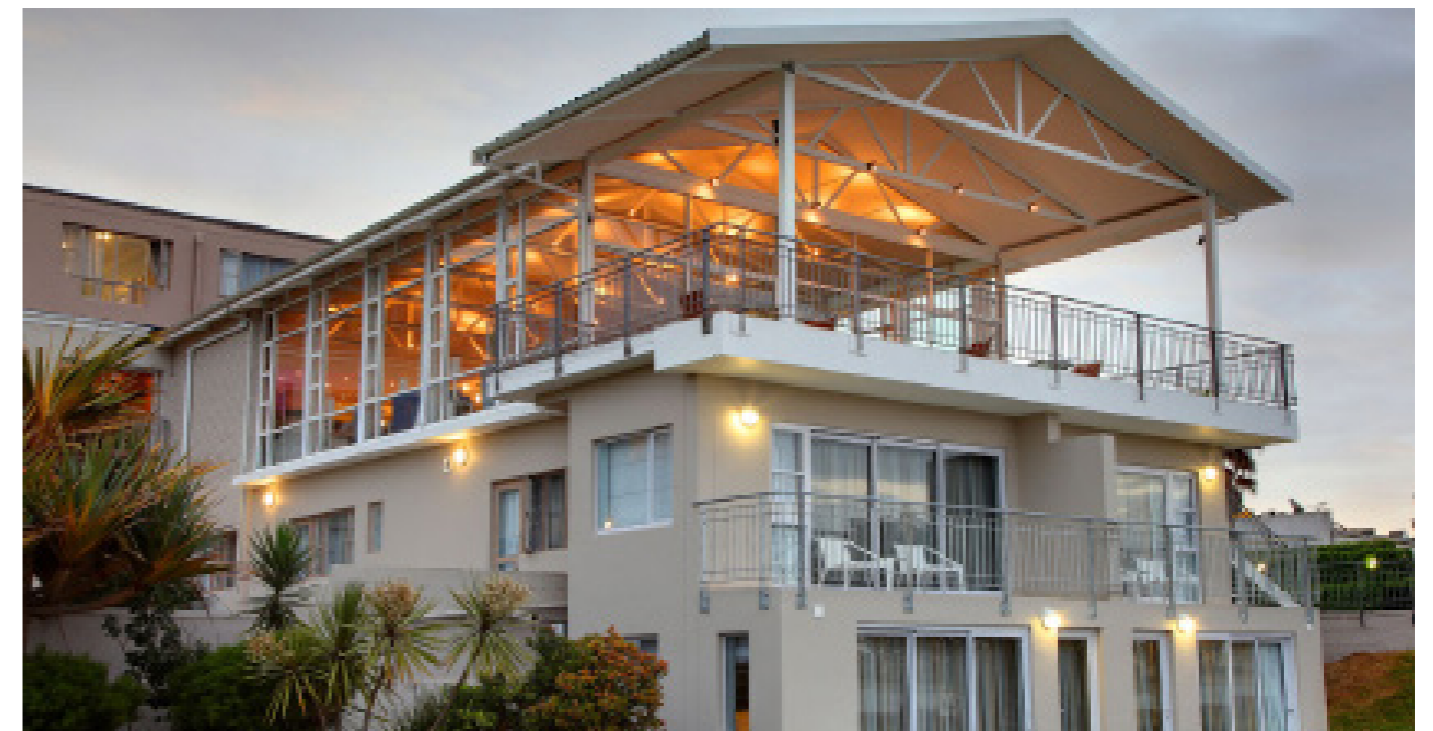
**PROJECT**  
Protea Hotel, Saldanha Bay

**YEAR COMPLETED**  
2013

**PROJECT VALUE**  
R13.5 Million

**CLIENT**  
Saldanha Hotel Properties (Pty) Ltd

**PROJECT DESCRIPTION**  
Refurbishment and upgrading of sixty room Protea Hotel, Saldanha Bay.



# COMMERCIAL

## PROJECT

Maitland Offices, Cape Town

## YEAR COMPLETED

2010

## PROJECT VALUE

R13 Million

## CLIENT

Diorco Investments Holdings (Pty) Ltd

## PROJECT DESCRIPTION

Three storey office building for private developer.





## EDUCATION

### PROJECT

Upgrading Teaching & Learning Spaces at  
NWU Campus (E7)

### YEAR COMPLETED

2025

### PROJECT VALUE

R37.47 Million

### CLIENT

North-West University (NWU)

### PROJECT DESCRIPTION

The upgrading of existing lecture halls,  
including new floor covering, paintwork,  
new suspended ceilings, carpentry work,  
loose furniture, upgrading electrical and  
mechanical services





## EDUCATION

### PROJECT

Four new schools in the Free State

### YEAR COMPLETED

2018

### PROJECT VALUE

R171 Million

### CLIENT

Development Bank of Southern Africa (DBSA)

### PROJECT DESCRIPTION

Construction of four new schools as part of the Accelerated Schools Infrastructure Delivery Initiative (ASIDI) 8 programme in the Free State:

- Dawiesville Primary School
- Ebenhaeserhoogte Intermediate School
- Hermana Primary School
- Thaba Patchoa Combined School





# EDUCATION

**PROJECT**  
New physics and geography building,  
Qwa Qwa

**YEAR COMPLETED**  
2015

**PROJECT VALUE**  
R24 Million

**CLIENT**  
University of the Free State

**PROJECT DESCRIPTION**  
New 2500m<sup>2</sup> science and geography building for the UFS at Qwa Qwa Campus consisting of an admin block, a classroom block, three geography labs, two physics labs, two physics research labs, a physics lecture, store rooms, a dark room and toilet blocks and a link bridge.



# EDUCATION

**PROJECT**  
Northern Cape Libraries

**YEAR COMPLETED**  
2012

**PROJECT VALUE**  
R50 Million

**CLIENT**  
Northern Cape Department of  
Sports, Arts and Culture

**PROJECT DESCRIPTION**  
Construction of four new community  
libraries in Richmond District, Barkley  
West, Hartswater and Nababeep  
District.



# EDUCATION

## PROJECT

CUT Bloemfontein Campus, Dirk Coetzee Building

## YEAR COMPLETED

2012

## PROJECT VALUE

R41 Million

## CLIENT

Central University of Technology

## PROJECT DESCRIPTION

The Central University of Technology constructed the Dirk Coetzee Building adjacent to an existing laboratory facility and linked the two buildings with a bridge. The project included the construction of laboratories, offices, lecture rooms and meeting rooms.



# EDUCATION

## PROJECT

CUT Welkom Campus, Lecture Complex

## YEAR COMPLETED

2012

## PROJECT VALUE

R30 Million

## CLIENT

Central University of Technology

## PROJECT DESCRIPTION

The Central University of Technology upgraded its entire campus and this was the second of numerous building projects.



## EDUCATION

**PROJECT**  
Grade R brick and mortar classrooms

**YEAR COMPLETED**  
2010 - 2016

**PROJECT VALUE**  
R111.5 Million

**CLIENT**  
Western Cape Department of Transport and Public Works (Health)

**PROJECT DESCRIPTION**  
Roll-out of grade R brick and mortar classrooms throughout the Western Cape.



## EDUCATION

**PROJECT**  
Winnie Mandela Primary School,  
Johannesburg

**YEAR COMPLETED**  
2011

**PROJECT VALUE**  
R65 Million

**CLIENT**  
Gauteng Provincial Government

**PROJECT DESCRIPTION**  
The construction of a new primary  
school (Contract Management).





## EDUCATION

### PROJECT

Tembaletu School Dormitories, Gugulethu

### YEAR COMPLETED

2011

### PROJECT VALUE

R5 Million

### CLIENT

Hillsong Africa

### PROJECT DESCRIPTION

Construction of school dormitories focused on providing accommodation for children with disabilities.



## EDUCATION

### PROJECT

Fezile Dabi District Platooning Schools

### YEAR COMPLETED

2010

### PROJECT VALUE

R193 Million

### CLIENT

Free State Department of Public Works and Infrastructure

### PROJECT DESCRIPTION

The construction of four new schools in Deneysville, Villiers, Koppies and Viljoenskroon. Renovations and additions were also done to one existing school in Steynsrus.



## SPECIALITY

**PROJECT**  
Lighthouse Precinct Development, Agulhas

**YEAR COMPLETED**  
Current

**PROJECT VALUE**  
R57 Million

**CLIENT**  
South African National Parks (SANParks)

**PROJECT DESCRIPTION**  
Construction of interpretation centre, TNPA building & restaurant.



## SPECIALITY

**PROJECT**  
Dinosaur Interpretive Centre, Golden Gate Highlands National Park

**YEAR COMPLETED**  
2022

**PROJECT VALUE**  
R84 Million

**CLIENT**  
South African National Parks (SANParks)

**PROJECT DESCRIPTION**  
Construction of Dinosaur Interpretive Centre and associated infrastructure at Golden Gate Highlands National Park.





## SPECIALITY

### PROJECT

Constantia Uitsig Wine Estate, Cape Town

### YEAR COMPLETED

2019

### PROJECT VALUE

R142 Million

### CLIENT

Meerenhof Properties (Pty) Ltd

### PROJECT DESCRIPTION

Redevelopment of an existing wine farm.



## SPECIALITY

### PROJECT

Naval Hill Digital Planetarium, Bloemfontein

### YEAR COMPLETED

2012

### PROJECT VALUE

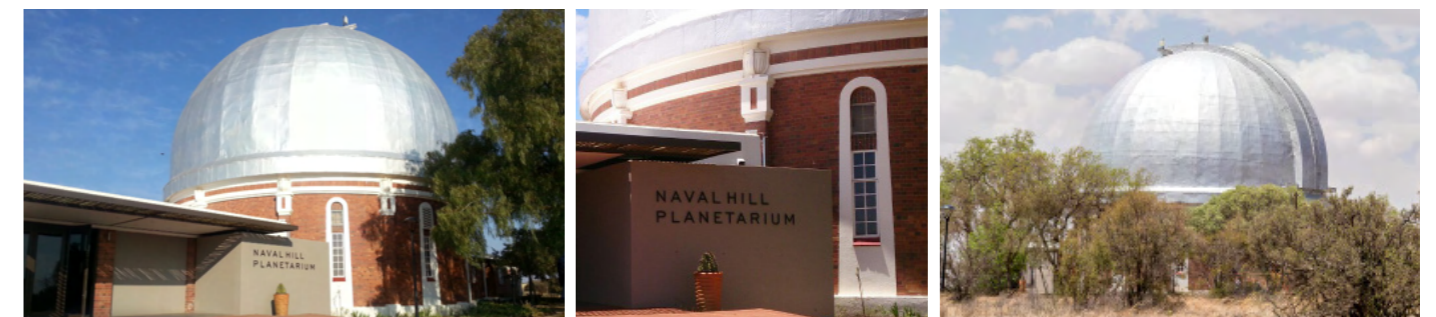
R6 Million

### CLIENT

The University of the Free State, Mangaung Metro Municipality and Department of Economic Development, Tourism and Environmental Affairs

### PROJECT DESCRIPTION

Conversion of the Lamont Hussey Observatory on Naval Hill (Bloemfontein) into a digital planetarium, with USA technology and dome. The existing building was altered to accommodate the planetarium specifications.





## SPECIALITY

**PROJECT**  
SANParks: Skukuza Rest Camp Upgrades

**YEAR COMPLETED**  
2025

**PROJECT VALUE**  
R60.71 Million

**CLIENT**  
South African National Parks (SANParks)

**PROJECT DESCRIPTION**  
This project involved the repair and renovation of accommodation units at Skukuza Rest Camp for SANParks, comprising 12 two-bedroom units, 16 three-bedroom units, and 4 universal access units delivered under multiple work orders. The scope included full renovation with structural alterations, new foundations and patios, roof upgrades, upgraded water, electrical, gas and air-conditioning services, complete furnishing, and associated external works such as drainage, roads, and landscaping.



## GOVERNMENT

**PROJECT**  
SAPS Provincial Offices, Cape Town

**YEAR COMPLETED**  
Current

**PROJECT VALUE**  
R1.8 Billion

**CLIENT**  
National Department of Public Works

**PROJECT DESCRIPTION**  
Construction of new SAPS provincial offices in Cape Town.





## GOVERNMENT

### PROJECT

Secure care centre and one stop facility, Qwa Qwa

### YEAR COMPLETED

2014

### PROJECT VALUE

R95 Million

### CLIENT

Free State Department of Public Works and Infrastructure

### PROJECT DESCRIPTION

This facility is a secure care centre that comprises of a hostel, classrooms, kitchen, laundry and dining hall. The one stop facility comprises of offices for the Department of Social Development, Justice, SAPS and a cell block. Supplementary buildings consist of a guardhouse, overnight facility, garages, carport and high security fencing.



## GOVERNMENT

### PROJECT

Clarens, Clocolan, Fouriesburg, Paul Roux ad Reitz SAPS  
repair and renovations

### YEAR COMPLETED

2012

### PROJECT VALUE

R65 Million

### CLIENT

National Department of Public Works

### PROJECT DESCRIPTION

Repair and renovations to existing stations, detective branches and houses, as well as the construction of a new office block at Clocolan.



# GOVERNMENT

**PROJECT**  
Galeshewe Branch Court, Kimberley

**YEAR COMPLETED**  
2010

**PROJECT VALUE**  
R60 Million

**CLIENT**  
National Department of Public Works

**PROJECT DESCRIPTION**  
Construction of new Galeshewe branch court in Kimberley.

# GOVERNMENT

**PROJECT**  
New Department of Public Works office building, Bloemfontein

**YEAR COMPLETED**  
Phase 1 : 2009 (New office building)  
Phase 2 : 2023 (Repair and Renovations)

**PROJECT VALUE**  
R217.62 Million

**CLIENT**  
National Department of Public Works

**PROJECT DESCRIPTION**  
Construction of the new Department of Public Works offices in central Bloemfontein comprises three levels of basement parking and seven levels of offices above ground and repair and renovations to default work.





## HEALTH

**PROJECT**  
Hermanus Hospital upgrade

**YEAR COMPLETED**  
2014

**PROJECT VALUE**  
R65 Million

**CLIENT**  
Western Cape Department of Transport and Public Works (Health)

**PROJECT DESCRIPTION**  
Upgrade of Hermanus Public Hospital including construction of new emergency unit, main entrance, outpatients department, maternity ward, operating theatre and bulk store.

## HEALTH

**PROJECT**  
Grabouw Community Health Care Centre

**YEAR COMPLETED**  
2012

**PROJECT VALUE**  
R13 Million

**CLIENT**  
Western Cape Department of Transport and Public Works (Health)

**PROJECT DESCRIPTION**  
Extensions and alterations to Grabouw Clinic, including a new infectious disease unit, pharmacy, main reception and consulting rooms.



# HEALTH

## PROJECT

Elizabeth Ross Hospital, Qwa Qwa

## YEAR COMPLETED

2011

## PROJECT VALUE

R60 Million

## CLIENT

Free State Department of Public Works and Infrastructure

## PROJECT DESCRIPTION

Extensions and alterations to Elizabeth Ross hospital, including new consulting rooms, theaters, x-ray room, reception and bathroom facilities.



# HEALTH

## PROJECT

Groote Schuur Hospital refurbishment, Cape Town

## YEAR COMPLETED

2009

## PROJECT VALUE

R4.5 Million

## CLIENT

Western Cape Department of Transport and Public Works (Health)

## PROJECT DESCRIPTION

Roof refurbishment of old main block.





## HEALTH

### PROJECT

Medical Centre, Lubango, Angola

### YEAR COMPLETED

2005

### PROJECT VALUE

US\$ 2.3 Million

### CLIENT

Mahe (Pty) Ltd

### PROJECT DESCRIPTION

Construction of new hospital (phase 1).

## HEALTH

### PROJECT

Tygerberg Hospital refurbishment, Cape Town

### YEAR COMPLETED

2009

### PROJECT VALUE

R3 Million

### CLIENT

Western Cape Department of Transport and Public Works (Health)

### PROJECT DESCRIPTION

Refurbishment of B-block theatres, high care ward and ward D.



# HUMAN SETTLEMENT

## PROJECT

Communicare: Bothasig Gardens Phase 3

## YEAR COMPLETED

2021

## PROJECT VALUE

R134.9 Million

## CLIENT

Communicare

## PROJECT DESCRIPTION

Construction of four storey blocks with 314 social housing units



# HUMAN SETTLEMENT

PROJECT  
Metsimoholo Community Residential Units,  
Zamdela Sasolburg

YEAR COMPLETED  
2017

PROJECT VALUE  
R173 Million

CLIENT  
Department Public Works Free State

PROJECT DESCRIPTION  
New double storey residential blocks comprising 398 mixed apartments and 73 clusters.



# HUMAN SETTLEMENT

PROJECT  
New student residence, Qwa Qwa

YEAR COMPLETED  
2012

PROJECT VALUE  
R22 Million

CLIENT  
University of the Free State

PROJECT DESCRIPTION  
Construction of a new student residence at Qwa Qwa campus.



# HUMAN SETTLEMENT

## PROJECT

Low Cost Housing, Colesberg

## YEAR COMPLETED

2011

## PROJECT VALUE

R120 Million

## CLIENT

Pixley ka Seme Local Municipality

## PROJECT DESCRIPTION

Construction of 1300 low cost houses at Colesberg.



# INDUSTRIAL

## PROJECT

Dube Tradeport Corporation: Mini Factories in TradeZone 1, Durban

## YEAR COMPLETED

2019

## PROJECT VALUE

R95 Million

## CLIENT

Dube Tradeport

## PROJECT DESCRIPTION

The construction of mini factories offering integrated warehousing and office space for light industrial manufacturing. The units consist of warehouses, offices and storage.





# INDUSTRIAL

## PROJECT

Spec-Build Warehouse On Erf 650, La Mercy located at Dube Tradeport

## YEAR COMPLETED

2023

## PROJECT VALUE

R151.59 Million

## CLIENT

Dube Tradeport

## PROJECT DESCRIPTION

The construction of mini factories offering integrated warehousing and office space for light industrial manufacturing. The units consist of warehouses, offices and storage.





# TRANSPORT

## PROJECT

Mangaung Intermodal Transport Facility, Bloemfontein

## YEAR COMPLETED

2011

## CONSTRUCTION VALUE

R340 Million

## CLIENT

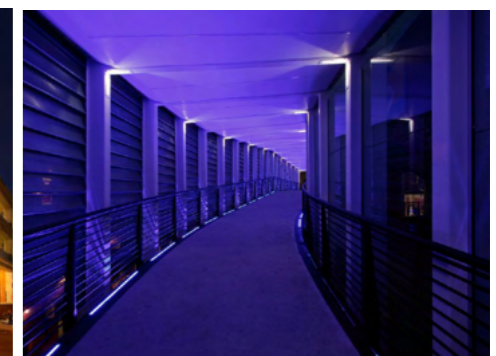
Mangaung Metro Municipality

## PROJECT DESCRIPTION

This facility is an intermodal (merging of different modes of transport) facility for the taxi services in Bloemfontein. It was constructed on the Bloemspruit Canal with a construction area of approximately 50 000m<sup>2</sup>.



PROUD WINNER OF STEEL AWARD 2012



# LIST OF PROJECTS

## PROJECTS CURRENT OR COMPLETED WITHIN THE LAST 10 YEARS

PROJECT DESCRIPTION	CLIENT / EMPLOYER	VALUE	STATUS
GREAT OAKS RETIREMENT DEVELOPMENT, CONSTANTIA	CONSTANTIA LIFE DEVELOPERS	R553 899 614	COMPLETED
CONSTRUCTION OF 4 NEW SCHOOLS AS PART OF THE ASIDI 8 PROGRAMME IN THE FS: - EBENHAESERHOOGTE INTERMEDIATE - HERMANA PRIMARY - DAWIESVILLE PRIMARY - THABA PATCHOA COMBINED	DEVELOPMENT BANK OF SOUTHERN AFRICA (DBSA)	R171 441 971	COMPLETED
WELKOM SAPS: REPAIR AND RENOVATIONS PHASE 1A + 1B	NATIONAL DEPARTMENT OF PUBLIC WORKS / DEVELOPMENT BANK OF SOUTH AFRICA (DBSA)	R146 066 311	COMPLETED
CONSTANTIA UITSIG WINE ESTATE	MEERHOF PROPERTIES (PTY) LTD	R142 183 870	COMPLETED
THE SENTINEL APARTMENTS, CAPE TOWN	PEARLDALE PROPERTY DEVELOPERS PTY LTD	R135 777 100	COMPLETED
BOTHASIG GARDENS, PHASE 3	COMMUNICARE	R134 951 778	COMPLETED
DESIGN AND CONSTRUCTION OF A SPEC-BUILD WAREHOUSE ON ERF 650, LA MERCY LOCATED AT DUBE TRADEPORT	DUBE TRADEPORT	R151 599 621	COMPLETED
DUBE TRADEPORT CORPORATION: MINI-FACTORIES IN TRADEZONE 1	DUBE TRADEPORT	R95 950 994	COMPLETED
CONSTRUCTION OF DINOSAUR INTERPRETIVE CENTRE AND ASSOCIATED INFRASTRUCTURE AT GOLDEN GATE HIGHLANDS NATIONAL PARK	SOUTH AFRICAN NATIONAL PARKS (SANPARKS)	R83 399 052	COMPLETED
NEW THEMBALIHLE PRIMARY SCHOOL AT VREDE	FREE STATE PROVINCIAL GOVERNMENT: DEPARTMENT OF EDUCATION	R65 675 600	COMPLETED
BENNETT STREET APARTMENTS, GREEN POINT	SILVER FALCON TRADING 231 (PTY) LTD	R57 291 000	COMPLETED
CHESTERFIELD APARTMENTS, RONDEBOSCH	THE NOVA GROUP	R53 946 929	COMPLETED
THE SUMMERLEY APARTMENTS, KENILWORTH	THE NOVA GROUP	R40 187 000	COMPLETED
THE CAPITAL MIRAGE HOTEL FIT-OUT	THE ZEPHYR PARTNERSHIP	R38 956 000	COMPLETED

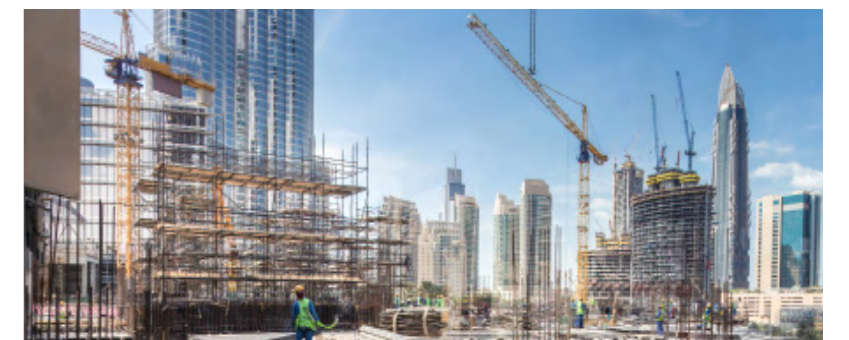
PROJECT DESCRIPTION	CLIENT / EMPLOYER	VALUE	STATUS
BLOEMFONTEIN: GOVERNMENT OFFICE BUILDING: CLOSE OUT	NATIONAL DEPARTMENT OF PUBLIC WORKS	R35 623 136	COMPLETED
LE PETIT VILLAGE FRANSCHHOEK	SILVER FALCON TRADING 231 (PTY) LTD	R30 844 965	COMPLETED
MODULAR LECTURE HALLS ON QWA QWA CAMPUS	UNIVERSITY OF THE FREE STATE	R29 411 130	COMPLETED
POTCHEFSTROOM CAMPUS: TRANSFORMING TEACHING & LEARNING SPACES FOR BLENDED LEARNING BUILDING E7, BLENDED LEARNING	NORTH-WEST UNIVERSITY (NWU)	R35 218 762	COMPLETED
HEILBRON MAGISTRATE: REPAIR AND RENOVATIONS	NATIONAL DEPARTMENT OF PUBLIC WORKS	R19 172 383	COMPLETED
POTCHEFSTROOM CAMPUS: PROJECT: CAPITAL RENEWAL OF FERDINAND POSTMA LIBRARY (ARCHIVES AND MUSEUM), BUILDING E7	NORTH-WEST UNIVERSITY (NWU)	R13 854 959	COMPLETED
38 LION STREET, STUDENT ACCOMMODATION	VARSITY VILLAGE	R17 159 746	COMPLETED
DUBE TENANT INSTALLATION	DUBE TRADEPORT	R15 873 093	COMPLETED
BLOEMFONTEIN AIR FORCE BASE CLINIC	NATIONAL DEPARTMENT OF PUBLIC WORKS	R15 180 496	COMPLETED
MARTINIQUE APARTMENTS, FRESNAYE	THE NOVA GROUP	R14 960 000	COMPLETED
38 GLENCOE ROAD, HIGGOVALE	MR FRANCESCO SVELTO	R14 784 700	COMPLETED
THORNTON STATION AND GUEST HOUSE	PRASA	R13 504 399	COMPLETED
HOTEL SCHOOL ATRIUM ROOF AND REFURBISHMENT	THE CENTRAL UNIVERSITY OF TECHNOLOGY	R9 799 639	COMPLETED
POTCHEFSTROOM CAMPUS. PROJECT: PC-G16 - REFURBISH SIMULATION MANUFACTURING LABORATORY FOR SCHOOL OF PHARMACY	NORTH-WEST UNIVERSITY (NWU)	R9 734 290	COMPLETED
KSIA: RETAIL RENOVATIONS AT KING SHAKA INTERNATIONAL AIRPORT	AIRPORTS COMPANY SOUTH AFRICA (ACSA)	R9 734 017	COMPLETED
TSEKI MAGISTRATE - QWA QWA: REPAIR AND RENOVATIONS	NATIONAL DEPARTMENT OF PUBLIC WORKS	R8 612 073	COMPLETED
ROUXVILLE MAGISTRATES OFFICE: ADDITIONAL ACCOMMODATION	NATIONAL DEPARTMENT OF PUBLIC WORKS	R7 944 946	COMPLETED

PROJECT DESCRIPTION	CLIENT / EMPLOYER	VALUE	STATUS
UFS SECURITY CLUSTER & KOVSIE GEAR & QLIT STUDIO	UNIVERSITY OF THE FREE STATE	R7 863 218	COMPLETED
CENTRAL UNIVERSITY OF TECHNOLOGY BLOEMFONTEIN: REPAIRS AND RENOVATIONS TO HOSTELS	FREE STATE TECHNIKON	R6 919 463	COMPLETED
CONVERSION OF UNACCEPTABLE STRUCTURES: MATSIKENG PRIMARY SCHOOL	FREE STATE PROVINCIAL GOVERNMENT: DEPARTMENT OF EDUCATION	R6 708 564	COMPLETED
SERENGETI OFFICE BUILDING	SERENGETI BESIGHEIDS TRUST	R6 482 074	COMPLETED
HOUSE MTHEMBU	JEREMIAH MTHEMBU	R5 668 669	COMPLETED
STAFIX ELECTRICAL FENCE CENTRE KIMBERLEY	STAFIX BLOEMFONTEIN (PTY) LTD.	R5 484 432	COMPLETED
REITZ MAGISTRATE'S COURT: REPAIRS AND RENOVATIONS	REITZ MAGISTRATE'S COURT: REPAIRS AND RENOVATIONS	R5 303 927	COMPLETED
NC URBAN TVET COLLEGE - PHATSIMANG CAMPUS	NORTHERN CAPE URBAN TVET COLLEGE	R5 023 499	COMPLETED
PROVISION FOR GENERAL UPGRADING AND RENOVATIONS TO ALL RESIDENCES, ORION BUILDING, CRICKET CLUB, EENDRAG RESIDENCE, ORION FACILITIES, FNB STADIUM, SCIENCE PARK AND THE ADVANCEMENT & MARKETING	CENTRAL UNIVERSITY OF TECHNOLOGY (CUT)	R4 620 058	COMPLETED
CENTRE FOR EARTH AND SPACE ENVIRONMENTAL	UNIVERSITY OF THE FREE STATE	R4 062 626	COMPLETED
POTCHEFSTROOM CAMPUS: PROJECT: CAPITAL RENEWAL OF MULTIPURPOSE AUDIT ROOF	NORTH-WEST UNIVERSITY (NWU)	R4 045 248	COMPLETED
DEWETSDORP MAGISTRATES OFFICE: REPAIRS AND RENOVATIONS	NATIONAL DEPARTMENT OF PUBLIC WORKS	R4 041 785	COMPLETED
HOUSE STOPFORTH, NOORDHOEK	PRIVATE CLIENT	R3 633 600	COMPLETED
MAHIKENG CAMPUS. PROJECT: RELOCATE DISABILITY UNIT AND CONTRUCT ADDITIONS FROM EXTERNAL FUNDS	NORTH-WEST UNIVERSITY (NWU)	R3 579 023	COMPLETED
MAHIKENG, POTCHEFSTROOM AND VANDERBIILPARK CAMPUS. PROJECT: ESTABLISH LNFORMAL LEARNING SPACES _ E7	NORTH-WEST UNIVERSITY (NWU)	R2 878 391	COMPLETED

PROJECT DESCRIPTION	CLIENT / EMPLOYER	VALUE	STATUS
REFURBISHMENT OF THE ZR MAHABANE BUILDING AT THE BLOEMFONTEIN CAMPUS	CENTRAL UNIVERSITY OF TECHNOLOGY (CUT)	R2 651 528	COMPLETED
GEORGE DU TOIT REPAIR AND RENOVATION HR VAULTS	UNIVERSITY OF THE FREE STATE	R2 648 472	COMPLETED
PROVISION FOR GENERAL UPGRADING AND RENOVATIONS TO ALL RESIDENCES, ORION BUILDING, CRICKET CLUB, EENDRAG RESIDENCE, ORION FACILITIES, FNB STADIUM, SCIENCE PARK AND THE ADVANCEMENT & MARKETING	CENTRAL UNIVERSITY OF TECHNOLOGY (CUT)	R2 494 742	COMPLETED
PLANNING AND DESIGN OF THE SIU BLOEMFONTEIN OFFICE	SPECIAL INVESTIGATING UNIT	R1 677 622	COMPLETED
UFS QWA QWA ICT LAB CTL	UNIVERSITY OF THE FREE STATE	R1 138 814	COMPLETED
SACEMA WYNKELDER, STELLENBOSCH UNIVERSITY	UNIVERSITY OF STELLENBOSCH	R1 069 150	COMPLETED
PROJECT DESCRIPTION	CLIENT / EMPLOYER	VALUE	STATUS
SAPS PROVINCIAL OFFICES, MATILAND, CAPE TOWN	NATIONAL DEPARTMENT OF PUBLIC WORKS	R1 869 347 524	CURRENT
PROFESSIONAL SERVICE PROVIDERS FOR TERMINAL EXPANSION PROJECT AT ACSA'S GEORGE AIRPORT	AIRPORTS COMPANY SOUTH AFRICA (ACSA)	R1 629 241 320	CURRENT
N1 HUGUENOT TUNNEL	SANRAL / SMEC	R594 715 670	CURRENT
CONSTRUCTION OF FOUR NEW MEGA SCHOOLS (FSDOE)	DBSA / FS DEPARTMENT OF EDUCATION	R408 771 579	CURRENT
VANDERBIJLPARK CAMPUS NWU NEW STUDENT HOUSING AT VANDERBIJLPARK CAMPUS	NORTH-WEST UNIVERSITY (NWU)	R104 091 374	CURRENT
APPOINTMENT OF SUB-CONSULTANT TO ACT AS QUANTITY SURVEYOR FOR THE CONSTRUCTION OF A NEW MUNICIPAL MAIN OFFICE BUILDING AT 49 VOORTREK STREET IN SWELLENDAM	SWELLENDAM MINICIPALITY	R66 023 000	CURRENT
FRAMEWORK AGREEMENT FOR PROFESSIONAL SERVICES ASSOCIATED WITH THE PROVISION OF INFRASTRUCTURE RELATED SERVICES WITHIN THE WESTERN CAPE	WESTERN CAPE GOVERNMENT HEALTH IN ASSOCIATION WITH WESTERN CAPE EDUCATION DEPARTMENT / GVK	R255 909 633	CURRENT
BUILDING WORKS AND REFURBISHMENT TO VARIOUS NWU CAMPUSES	NORTH-WEST UNIVERSITY (NWU)	R189 566 000	CURRENT

PROJECT DESCRIPTION	CLIENT / EMPLOYER	VALUE	STATUS
NEWCASTLE SAPS COMPLEX: REPAIR AND RENOVATIONS	NATIONAL DEPARTMENT OF PUBLIC WORKS	R172 000 000	CURRENT
BUILDING WORKS AND RENOVATIONS TO VARIOUS SOUTH AFRICAN NATIONAL PARKS	SOUTH AFRICAN NATIONAL PARKS (SANPARKS)	R159 848 861	CURRENT
NEW OFFICE ADDITIONAL CLINICAL SPACE, GUARDHOUSE & GENERAL WASTE STORE: NSELENI CHC	KWAZULU-NATAL PROVINCIAL GOVERNMENT: DEPARTMENT OF PUBLIC WORKS	R99 000 000	CURRENT
LIGHTHOUSE PRECINCT DEVELOPMENT, AGULHAS	SOUTH AFRICAN NATIONAL PARKS (SANPARKS)	R57 469 000	CURRENT
LIGHTHOUSE PRECINCT DEVELOPMENT, AGULHAS	SOUTH AFRICAN NATIONAL PARKS (SANPARKS)	R57 469 000	CURRENT PROJECT
FRAMEWORK AGREEMENT FOR PROFESSIONAL SERVICES ASSOCIATED WITH THE PROVISION OF INFRASTRUCTURE RELATED SERVICES WITHIN THE WESTERN CAPE: EXPANSION TO SCHOOLS	WESTERN CAPE GOVERNMENT HEALTH IN ASSOCIATION WITH WESTERN CAPE EDUCATION DEPARTMENT / MARTIN & EAST (PTY) LTD	R52 968 037	CURRENT
DUNDONALD POLICE STATION – MPUMALANGA PROVINCE: APPOINTMENT OF MULTI-DISCIPLINARY BUILT ENVIRONMENT PROFESSIONAL CONSULTANCY	SOUTH AFRICAN POLICE SERVICE (SAPS)	R32 466 930	CURRENT
WASTEWATER TREATMENT PLANT PILOT PROJECT 20220/02023	WESTERN CAPE GOVERNMENT HEALTH IN ASSOCIATION WITH WESTERN CAPE EDUCATION DEPARTMENT / GVK	R28 000 000	CURRENT
ENTRANCE OFFICES TO WEST COAST NATIONAL PARK, LANGEBAAN	SOUTH AFRICAN NATIONAL PARKS (SANPARKS)	R25 000 000	CURRENT
KESTELL MAGISTRATE: REPAIR AND RENOVATION	NATIONAL DEPARTMENT OF PUBLIC WORKS	R24 005 024	CURRENT
POTCHEFSTROOM CAMPUS PC-A11 NEW VILLAGERS TOWN RESIDENCE CLUBHOUSE CAMPUS: POTCHEFSTROOM	NORTH-WEST UNIVERSITY (NWU)	R17 912 856	CURRENT
POTCHEFSTROOM CAMPUS. PROJECT: PHASE 2 - RELOCATION OF CLUBHOUSES (BELLATRIX, DINKI, LAVARIA, VILLAGERS)	NORTH-WEST UNIVERSITY (NWU)	R13 854 959	CURRENT
KAGISANO MOLOPO LOCAL MUNICIPALITY BUILDING	BVI CONSULTING ENGINEERS	R11 290 622	CURRENT

PROJECT DESCRIPTION	CLIENT / EMPLOYER	VALUE	STATUS
APPOINTMENT OF SUB-CONSULTANT TO ACT AS QUANTITY SURVEYOR FOR THE PARTIAL DEMOLITION AND REFURBISHMENT OF THE THUSONG COMMUNITY CENTRE BUILDING IN SWELLENDAM	SWELLENDAM MINICIPALITY	R8 752 127	CURRENT
KROONSTAD MAGISTRATE OFFICES: ADDITIONAL ACCOMMODATION	NATIONAL DEPARTMENT OF PUBLIC WORKS	R7 982 891	CURRENT
INSTALLATION OF NEW HIGH SECURITY FENCING AND ASSOCIATED EARTHWORKS FOR TSEBO ULWAZI SECONDARY SCHOOL IN FRANKFORT		R3 862 300	CURRENT
VAAL CAMPUS: PROJECT: RELOCATION OF CURRENT COMPUTER LABORATORY FROM BUILDING 3 TO NEW SPACE.	NORTH-WEST UNIVERSITY (NWU)	R2 429 765	CURRENT
POTCHEFSTROOM CAMPUS. PROJECT: MINOR BUILDING WORKS ON THE POTCHEFSTROOM CAMPUS - BUILDING G15	NORTH-WEST UNIVERSITY (NWU)	R1 419 896	CURRENT
APPOINTMENT OF SUB-CONSULTANT TO ACT AS QUANTITY SURVEYOR FOR THE DEMOLITION/RELOCATION OF THE MUNICIPAL INFRASTRUCTURE AT 49 VOORTREK STREET IN SWELLENDAM	SWELLENDAM MINICIPALITY	R1 014 964	CURRENT





[RUBIQUANT.COM](http://RUBIQUANT.COM)

Bloemfontein 051 436 9538 • Harrismith 058 622 3453 • Cape Town 021 712 0229  
Pretoria 082 578 7498 • Kimberley 053 831 2930 • Richard's Bay 082 906 1658